

The background of the entire page is a vibrant, abstract pattern of tropical leaves and flowers. The leaves are in various shades of purple, blue, orange, and green, with some having prominent veins. Interspersed among the leaves are bright red flowers, possibly hibiscus, with yellow centers. The overall style is bold and artistic, with a collage-like feel.

# VELAMMAL COLLEGE OF ENGINEERING AND TECHNOLOGY

DEPARTMENT OF COMPUTER SCIENCE AND ENGINEERING

## **CSE CHRONICLES**

LEARN TODAY... LEAD TOMORROW...

### **VISION**

TO BECOME A CENTER OF EXCELLENCE  
IN THE FIELD OF COMPUTER SCIENCE  
AND ENGINEERING UPHOLDING  
SOCIAL VALUES

### **MISSION**

- HEIGHTENING THE KNOWLEDGE OF THE FACULTY IN RECENT TRENDS THROUGH CONTINUOUS DEVELOPMENT PROGRAMMES.
- TRANSFORMING THE STUDENTS INTO GLOBALLY COMPETENT AND TECHNICALLY WELL-EQUIPPED COMPUTER PROFESSIONALS WITH STRONG THEORETICAL AND PRACTICAL KNOWLEDGE.
- CULTIVATING THE SPIRIT OF SOCIAL AND ETHICAL VALUES FOR THE CAUSE OF DEVELOPMENT OF OUR NATION.

VOLUME 05

ISSUE 04

JULY 2024 - DEC 2024



# CSE CHRONICLES

‘A World of Possibilities’



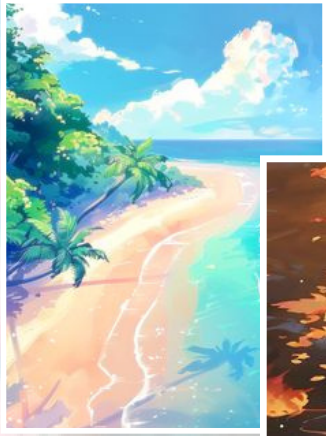
“  
Innovation distinguishes  
between a leader and a follower.  
-- Steve Jobs  
”

VOLUME 05

ISSUE 04

JULY 2024 - DEC 2024





**CHEIF ADIVISOR :**  
**Dr. R. Perumal Raja Ph. D.,**  
**Prof. & HOD (CSE)**  
**Vice Principal**

**EDITORIAL CHEIF :**

**Mrs. D. Jansi Rani**  
**B.E., M.E., M.B.A.,**  
**Assistant Professor**  
**Department of CSE**



**Beauty is  
everywhere, if  
you love season  
of nature.**

**- Shikha Baldev**

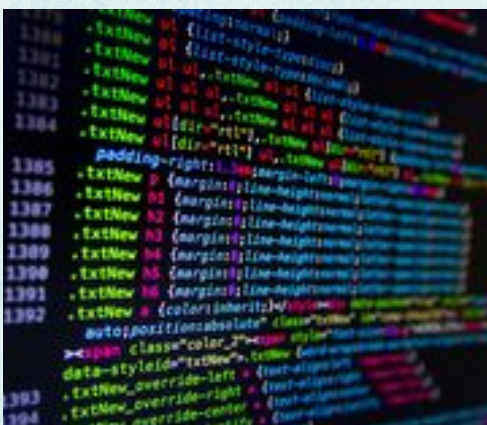
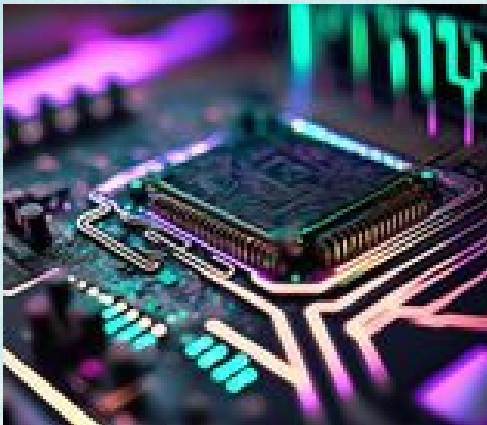
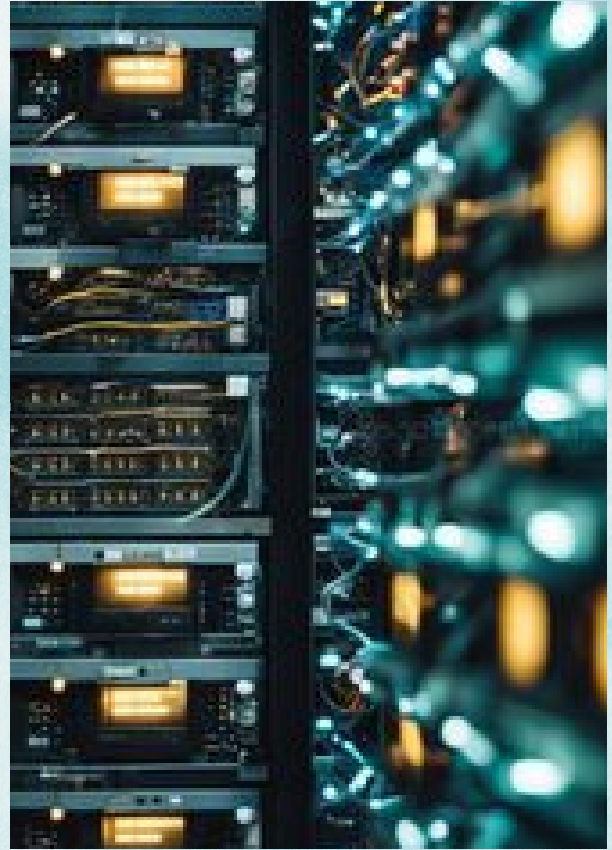




# Editor's Desk

This issue brings out the latent creative talents of the students and thus helps them to form the habit of reading and writing. It also helps them to hone their intellectual skills as well as benefits in widening their horizons of knowledge.

On behalf of the Velammal CSE department, We would like to wish all authors, patrons, and readers a wonderful and prosperous year ahead. When a thought that has been enduring in mind becomes true, it is truly an interesting and exciting experience.



This new assignment of ours as editors is one such cherished work that we would fulfill to the best of our attributes. We need the support of all students and the faculty. So sit back and enjoy browsing through the magazine

H A P P Y  
R E A D I N G  
F O L K S   ! !



# CHEIF ADVISOR



**Dr. R. Perumal Raja Ph.D.,  
Prof. & HOD (CSE)  
Vice Principal**

*Welcome to the Department of Computer Science and Engineering where we're dedicated to cultivate critical thinking and technical expertise. We aspire to shape not just intelligent professionals but individuals with strong character, integrity, and a commitment to excellence. Your Journey promises a holistic and enriching educational experience.*

*Our department is committed to nurturing excellence in computer science and engineering through a comprehensive range of undergraduate and postgraduate programs. Recognized as an approved Research Center by Anna University, Chennai. We prioritize cutting-edge research in information and communication engineering and offer honours degrees across diverse domains. With our state-of-the-art computer labs and centralized monitoring facilities, we strive to create a dynamic and supportive learning environment for our diverse student community.*

*The department functions with well qualified, experienced and dedicated faculty members which lead to requisite teaching and research requirements. The curriculum covers all streams of Computer Science and Engineering such as Hardware and System Programming. Application Development, Networking and distributed computing, Data Engineering and Data Analytics, and Software Engineering.*





# Table of Contents

1

**SEASONS OF GROWTH:  
OUR JOURNEY**

2

**VISUAL INSIGHTS**

3

**INSPIRING VISION**

4

**CINEMATIC  
ENGINEERING**

5

**MODERN MUSE**

6

**CRISIS AI  
INTEGRATION**

7

**HEALTH TECHNOLOGY**

8

**REFLECTIVE VERSE**

9

**DIGITAL TWIN**

10

**ZOHO CORPORATION**





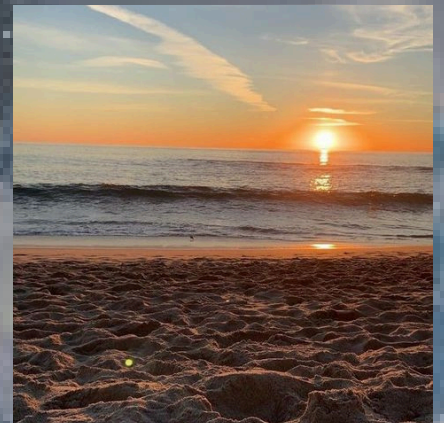
# Seasons of Growth

## Our Journey



Spring (Freshmen Year) is all about new beginnings, excitement, and exploration. Articles in this section capture the spirit of orientation, adapting to college life, and stories filled with the initial enthusiasm of students as they navigate their new world.

Summer (Sophomore Year) symbolizes growth, energy, and active involvement. This section features pieces that showcase student achievements, summer projects, and the development of deeper passions. It embodies the vibrant pursuit of interests, social events, and creative exploration.



Autumn (Junior Year) represents maturity, reflection, and preparation for future endeavors. Here, the articles delve into serious academic efforts, leadership roles, and strategic career planning. Stories and art in this phase highlight the experiences of students as they balance responsibilities and reflect on their progress.

Winter (Senior Year) marks the culmination of the college journey, filled with reflections and anticipation of the future. This section presents features on capstone projects, senior theses, farewell letters, and interviews with graduating students. It conveys a sense of readiness and the transition toward new beginnings beyond college life.





# VISUAL INSIGHTS

TURNING COMPLEX DATA INTO ACTIONABLE INSIGHTS.

In a world overflowing with data, understanding raw numbers can be overwhelming. This is where data visualization becomes invaluable, transforming complex data into clear, graphical formats that reveal trends, patterns, and insights at a glance.

By turning numbers into charts, graphs, and maps, data visualization allows us to see the story behind the data, making it easier to interpret and act upon.



**“ Data visualization transforms complexity into clarity,empowering decisions through actionable insights. ”**

Popular visualization types like line charts, bar charts, pie charts, and heat maps help represent data effectively by showcasing trends, comparisons, proportions, and concentrations. Tools such as Excel and Google Sheets are perfect for basic visuals, while advanced platforms like Tableau and Power BI enable interactive designs. For those with coding expertise, Python and R offer extensive customization options, making data visualization accessible and adaptable to various needs.



Data visualization helps us quickly understand information, identify trends, and communicate findings effectively. In business, it aids decision-making by showing sales trends or customer preferences. In healthcare, it can highlight patient health metrics or track disease outbreaks. Across fields, visualization allows for faster, data-driven insights.



Data visualization bridges the gap between raw data and actionable insights. By turning data into visuals, it becomes easier to understand and communicate important information, making data visualization a vital skill in today's data-driven world.

II CSE B

Dhanya Johnsy A R

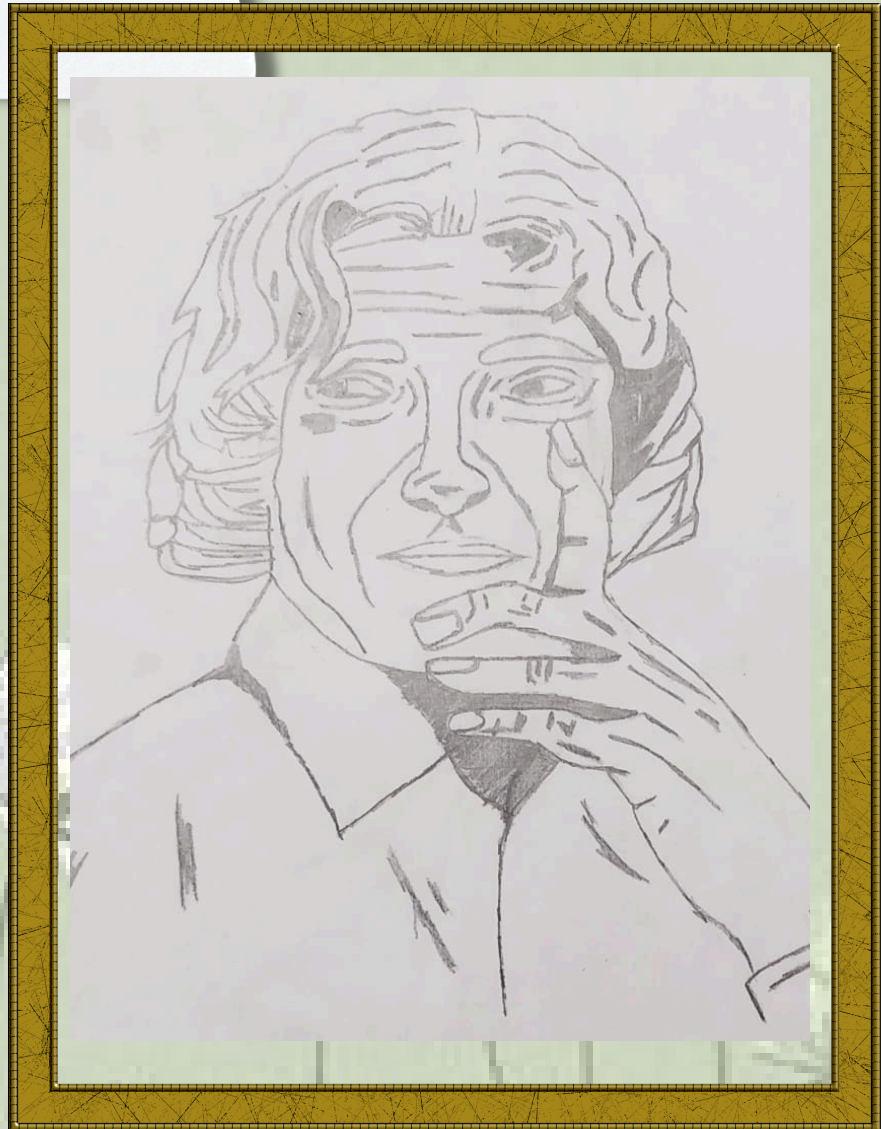


# Inspiring Vision

The inspiring essence of Dr. APJ Abdul Kalam, showcasing him as a symbol of knowledge and aspiration. The artist skillfully portrays the vision and warmth associated with this iconic figure, using detailed strokes to evoke admiration and motivation. This artwork stands as a tribute to one of India's most beloved leaders, reminding viewers of the power of dreams and resilience.

## About Artist

**Achuthan T B**  
**II CSE B**





# Cinematic Engineering

When we sit down to watch a film, we often marvel at the breathtaking visuals, seamless special effects, and immersive soundscapes. But behind these cinematic wonders lies a world of engineering marvels that bring the director's vision to life. Let's explore how technological innovations and engineering prowess have revolutionized the film industry.



Film technology has come a long way, from silent films and hand-cranked cameras to today's digital revolution. Think of "Metropolis" (1927) with its groundbreaking special effects or "The Matrix" (1999) and its iconic bullet-dodging scenes.

Engineering advancements have continuously pushed the boundaries of what's possible.

Special effects and CGI are prime examples of engineering in cinema. Engineers work with artists to create lifelike creatures and stunning landscapes. The dinosaurs in "Jurassic Park" (1993) and the world of "Avatar" (2009) showcase how CGI blends art and science to transport audiences to new worlds.

Sound design in films like "Star Wars" (1977) relied on engineering to create iconic sounds. Practical effects, including explosions and animatronics, were key before CGI. Movies like "Jaws" (1975) used engineering to bring fantastical elements to life.



## Virtual and Augmented Reality

VR and AR, as seen in "Ready Player One" (2018), are expanding filmmaking by blending virtual and real worlds. Engineering and art collaborate in set design, exemplified by the Hogwarts castle and spacecraft interiors in "Interstellar" (2014).

The magic of cinema is a testament to the incredible synergy between engineering and art. From early innovations to the latest technological breakthroughs, engineers have played a vital role in shaping the films we love.



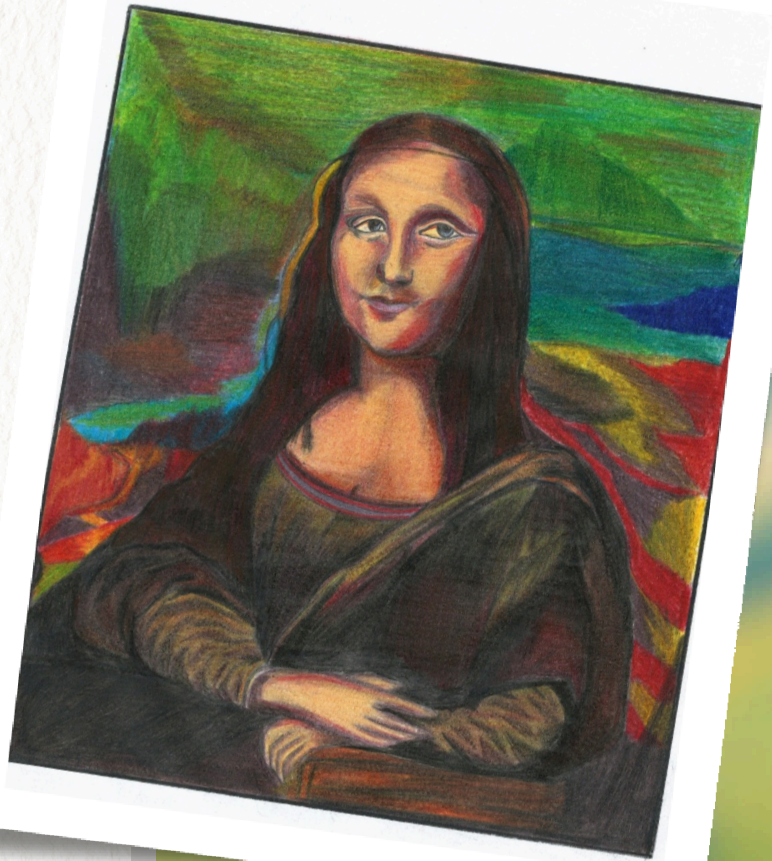


# About Me

Surendran K  
I CSE B

## Modern Muse

The "Monalisa" drawing by Surendran presents a contemporary take on the timeless masterpiece, blending classic art with modern elements. This reinterpretation showcases the artist's creativity and deep appreciation for merging traditional techniques with fresh, imaginative details. The piece invites viewers to reflect on the evolving nature of art and how it can bridge the past with present-day interpretations.







# CRISIS AI INTEGRATION

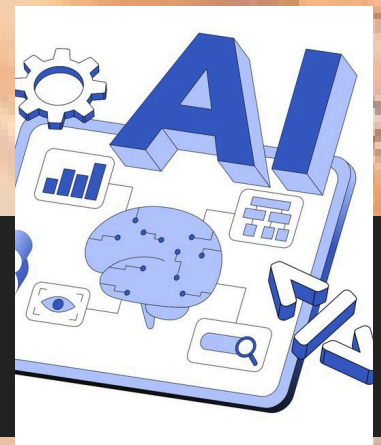
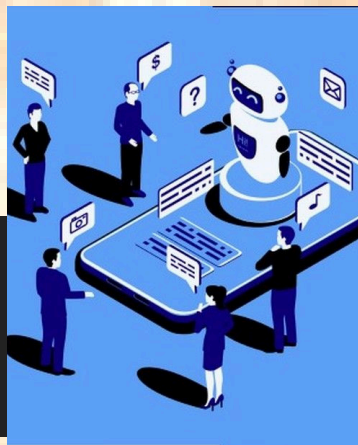
AI empowers swift crisis response.

This research investigates the pivotal role of Artificial Intelligence (AI) in revolutionizing crisis communication strategies. Effective communication during crises is essential, and this study explores how AI technologies can seamlessly integrate into existing frameworks to bolster responsiveness and adaptability. The research analyzes the potential of natural language processing, sentiment analysis, and machine learning algorithms to process large datasets during crises, aiming to leverage AI to predict public sentiment, analyze communication patterns, and optimize strategies in real-time.

The integration of AI in crisis communication presents opportunities to address challenges in real-time information dissemination and adaptive response strategies. As natural disasters, pandemics, and other emergencies rise, AI offers unparalleled capabilities in processing and analyzing vast data, thus enabling faster, data-driven decision-making. However, ethical considerations, including transparency, privacy, and bias, are essential when implementing AI in crisis management.

## *Highlights of AI in Crisis Communication*

Artificial Intelligence (AI) is transforming crisis communication by enabling faster, data-driven decision-making. Using tools like natural language processing and machine learning, AI can analyze large datasets in real-time and optimize communication strategies. This allows crisis managers to respond more effectively during emergencies, from natural disasters to pandemics. While AI enhances response capabilities, it is crucial to address ethical concerns, including transparency, privacy, and bias. Responsible integration ensures the technology's full potential is realized.



## *Methodology and Findings*

This study used qualitative research with 60 experts in crisis management and AI, exploring AI's role in crisis response, ethics, and strategies. Key themes emerged from participant insights and case studies, highlighting AI's potential to enhance response times but raising concerns about biases and trust, calling for transparent and accountable integration. Interviews with experts and case studies show both the promise and challenges of AI in crisis response.

## *Conclusion*

AI presents a significant opportunity in enhancing crisis communication by enabling faster responses and improved data analysis. Despite ethical challenges, AI can be a valuable ally in crisis management when integrated responsibly, promoting resilience and preparedness. Ongoing interdisciplinary collaboration and ethical standards are vital for realizing AI's full potential in crisis communication.



# Health Technology

INNOVATION EMPOWERING BETTER HEALTH

**H**ealth tech must balance innovation with regulation, ensuring safety and efficacy.

Health Tech is transforming healthcare by leveraging technologies like telemedicine, AI, and personalized medicine to improve patient outcomes, enhance accessibility, and reduce costs. Innovations in data analytics, blockchain, and virtual reality empower patients, streamline workflows, and bridge care gaps, paving the way for a more efficient and patient-centered healthcare system.

*Health tech is not just about technology; it's about humanity. It's about improving lives.*



Emerging trends in Health Tech are reshaping the industry, with AI-powered chatbots and virtual assistants enhancing patient engagement and support. The Internet of Medical Things (IoMT) is revolutionizing connectivity in healthcare, enabling real-time monitoring and seamless data exchange. Blockchain technology is improving data security and transparency, while 3D printing is advancing personalized medicine through custom prosthetics and implants. Additionally, virtual reality therapy is offering innovative treatments for pain management and mental health, driving a new era of patient-centered care.

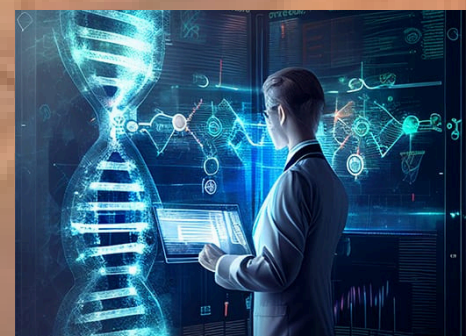


*Transforming healthcare means leveraging technology to empower patients, enhance accessibility, and redefine the future of wellness*

Wearable devices and IoT empower individuals to manage their health by tracking vital signs and chronic conditions, while real-time analytics enable proactive interventions and reduce hospitalizations. Seamless integration with EHRs and telemedicine platforms ensures patient-centered care. Meanwhile, AI transforms healthcare with early disease detection, personalized treatments, and predictive modeling, leveraging machine learning to uncover insights and enhance patient engagement through AI-powered chatbots.

Health Tech faces challenges in data security, regulatory compliance, and interoperability. Encouraging patient engagement and adoption is crucial for success. Investment and funding offer opportunities to drive innovation and expand access.

*Health Tech's rapid evolution highlights a transformative commitment to enhancing healthcare accessibility, efficiency, and patient-centered care through innovative technologies.*





# நவீன குறள்



அகர முதல எழுத்தெல்லாம் இணைய  
உலவி முதற்றே உலகு.

தோன்றின் கருவியோடு தோன்றுக அஃதிலார்  
தோன்றலின் தோன்றாமை நன்று.

கணினிஇன்று அமையாது உலகெனின் யார்யார்க்கும்  
இணையம்இன்று அமையாது ஒழுக்கு

கற்க கணினியைக் கற்பபைக் கற்றுபின்  
உலவு அதற்குத் தக.

உருவுகண்டு எள்ளாமை வேண்டும் உலகிற்கு  
நுண்செயலி அன்னார் உடைத்து.

அன்புடன்,

## சரவணன்

I CSE A



# DIGITAL TWIN

## IOT EMPOWERING DIGITAL REPLICAS

Digital Twin is a hot new 'emerging terminology space', but this is a real thing, and modelling is at the heart of it

**I**OT DIGITAL TWIN is a digital representation of a real-world entity, such as a device or a manufacturing production process.

A digital twin is a real-time virtual model of an asset or system created using IoT sensor data. It enables remote monitoring of devices, assets, or processes to analyze performance, identify issues, and test solutions before implementation. Insights from digital twins help enhance operational efficiency, production quality, and customer satisfaction.

Component twins represent individual system components, focusing on performance, condition, and lifecycle for predictive maintenance. Asset twins model entire assets, aggregating component data to enhance operational management. Process twins simulate workflows, optimizing efficiency by identifying bottlenecks through real-time data. System twins provide holistic models of entire systems, integrating components and processes for comprehensive analysis and decision-making.



IoT digital twins integrate real-time data from connected devices for continuous monitoring. They offer enhanced visualization through graphical interfaces, simplifying asset performance analysis. By analyzing historical and real-time data, they predict failures and maintenance needs, minimizing downtime. Simulation capabilities allow users to test changes virtually for better optimization. Insights from the digital twin create a feedback loop to improve physical systems.

**IoT digital twins bridge the physical and digital worlds, driving smarter decisions and optimized performance.**



# ZOHO CORPORATION

## ***YOUR LIFE'S WORK, POWERED BY OUR LIFE'S WORK***

*Zoho Corporation is an Indian multinational technology company that makes computer software and web-based business tools. It is best known for the online office suite offering Zoho Office Suite.*

Zoho Corporation, is an Indian global technology company that makes computer software and online business tools. The company was created in 1996 by Sridhar Vembu and Tony Thomas and has seven headquarters in Chennai, Tamil Nadu, India, and Austin in Del Valle, Texas. From 1996 to 2009, the company was known as AdventNet, Inc. It used to provide management software.

Zoho had more than 50 million customers in January 2020. In July 2022, the company had more than 80 million users. Back in 1996, we started AdventNet (Zoho's parent company) with a focus on Network Management. In the past 13 years, the company has grown significantly serving multiple markets and employing about 1000 people globally.

Today, we are announcing the name change for our parent company from AdventNet Inc to ZOHO Corporation. This name change represents the evolution of the company. Zoho Corp will have three divisions, each focusing on different market segments.



In fact, these three brands/divisions represent three different phases of the company. In 1996, we started serving the needs of OEMs; We evolved by offering installable products for Enterprise IT Management. We currently serve over 40K customers under our Manage Engine brand. We then evolved from products to SaaS, with Zoho to serve a bigger and broader market. As we bootstrapped our way from platforms to end products to Online Apps, the focus has always been on building a strong business by serving the customers well. Thanks to the continued support of our customers.

Celebrating wealth creation during a pandemic may feel inappropriate, but some of the 178 newcomers to Forbes' newly released list of the World's Billionaires are providing services that millions of people are relying on amidst our shelter-in-place reality.

So many people around the world stuck at home, work meetings, school classes, book groups, virtual happy hours and more are being held online via Zoom.



**Nagavishnu Karthik B S**  
**II CSE B**



Dear Readers,

# Thank you!

Thank you for taking the time to journey through our "Seasons of Growth" magazine. Your engagement with these stories, reflections, and artworks means the world to us. We hope you found inspiration, resonated with the experiences shared, and felt a sense of connection to your own academic path. Your support and curiosity are what make this endeavor meaningful.

Wishing you continued growth, success, and the excitement of new chapters ahead!



**Santhosh S**  
**II CSE B**





Every season tells a story.